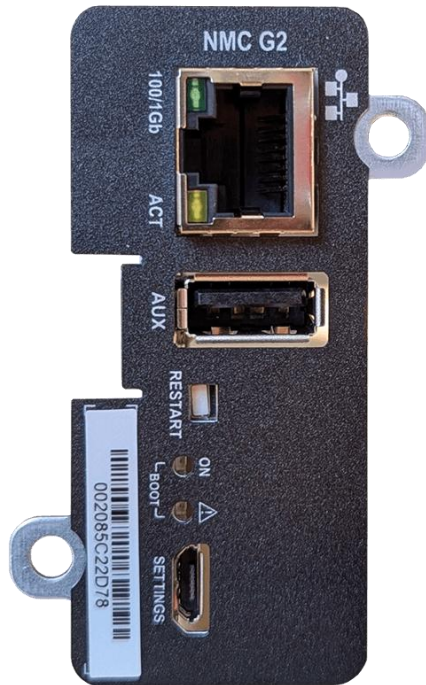




# PRODUCT COMPARISON

**SNMP-NMC-G2 vs SNMP-NMC-G1**





## ADVANTAGE

- High level of security
- Gigabit speed
- Cost efficient link to diagnostics and service
- High end user interface
- Using latest tools – IOT compatible
- API

## VALUE PROPOSITION

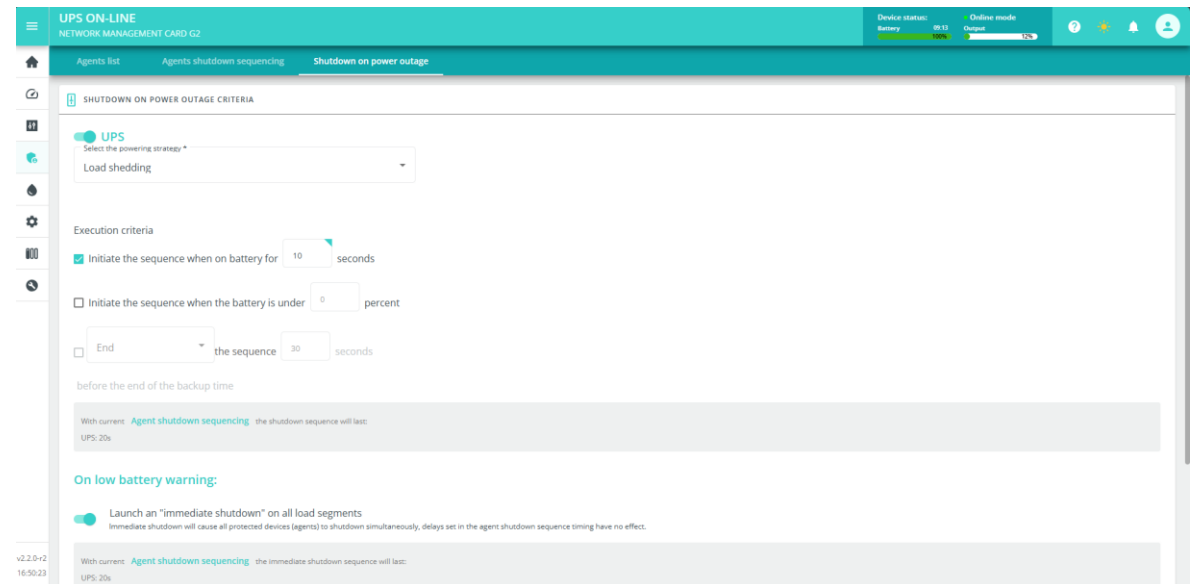
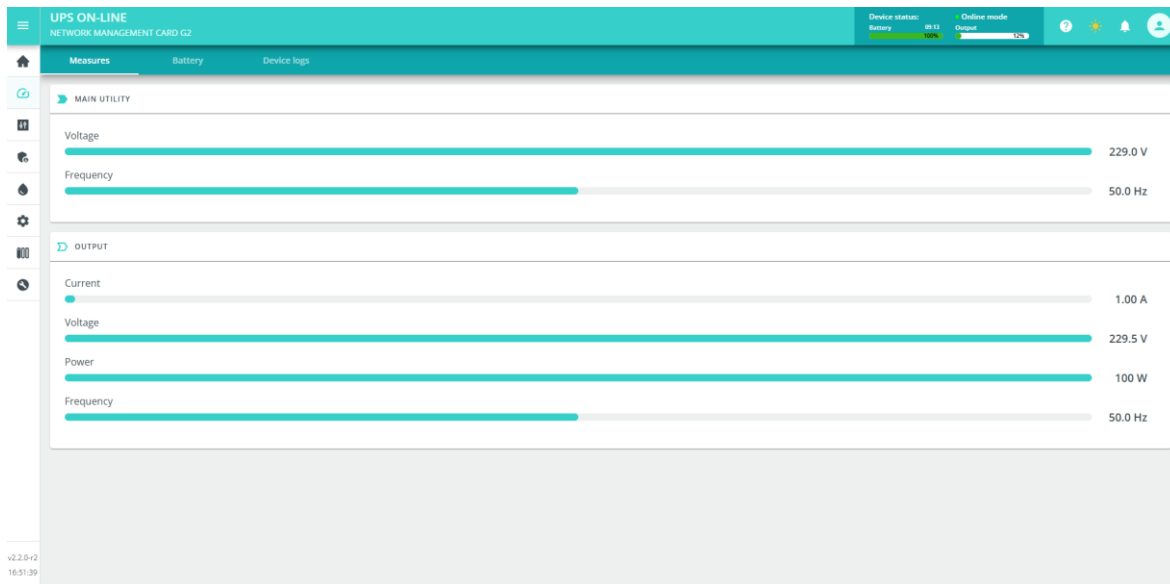
- Easy to use, secure and adaptable UPS web card

## TECHNICAL DIFFERENTIATORS

- New platform is simple, efficient and easy-to-use
- Based on Linux, easy to maintain
- Simplifies and automates the process

# NEW DEDICATED SNMP WEB PAGE

All the information can be easily viewed on a dedicated webpage.





- Secure boot process to prevent unauthorized code execution at startup.
- Hardware-based encryption to safeguard data at rest and in transit.
- Encrypted firmware to ensure only secure firmware get installed.
- Regular security checks and firmware updates to address vulnerabilities.
- Secure enclave for isolating sensitive operations and credentials.
- Market-Leading Cybersecurity.
- Secure connection using Rest API.
- User-configurable firewall reduces an organization's attackable surface area and helps meet specific network/ security compliance requirements.





### SNMP-NMC-G1

### SNMP-NMC-G2

Yes	HTML USER INTERFACE	Yes
No	NHTML 5 UI	Yes
Yes	SNMP v1/v2c/V3	Yes
Up to 100 MBPS	NETWORK SPEED	Up to 1000 MBPS
Yes	SECURE EMAIL	Yes
No	SSH REMOTE ACCESS	Yes
Yes	COMMUNICATION PROTOCOLS SNMP MODBUS TCP	Yes
Yes (Optional separate card)	MODBUS RTU, BACKNET, PROFIBUS	Yes (Optional separate card)



**Thank you!**

G-Tec Europe S.r.l.  
Strada Marosticana 81/13  
36031 Dueville (VI) Italy  
+39 0444 361321  
[info@gtec-power.eu](mailto:info@gtec-power.eu)