



GTEC UPS MODEL:

MUST400

Instruction to install SNMP card

SERVICE DOCUMENT

Doc.	Written	Approval	Date	Rev.	Description	Ref.
ISxx	ZBE	SNI	18/12/2014	00	SNMP installation	xxx

INSTRUCTION to install SNMP card on MUST400 series

PURPOSE AND SCOPE

This procedure is intended to define the procedures, criteria and settings to be performed in the activity of installation of the SNMP card on UPS series MUST400

Warning: *the operations must be carried out following the sequence shown in this specification.*



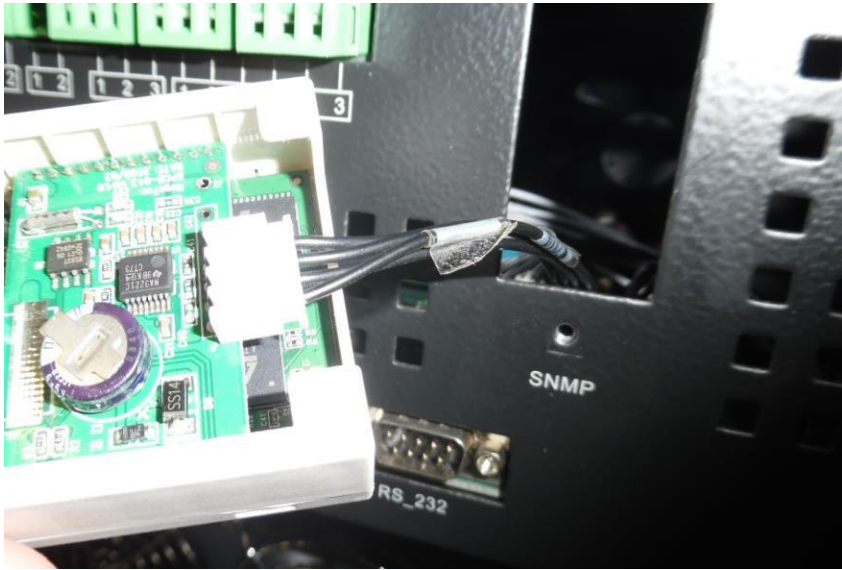
WARNING: Make sure that there is no presence of the supply voltage, that the loads are all disconnected and that the batteries are disconnected from the system.

1. Physical installation.

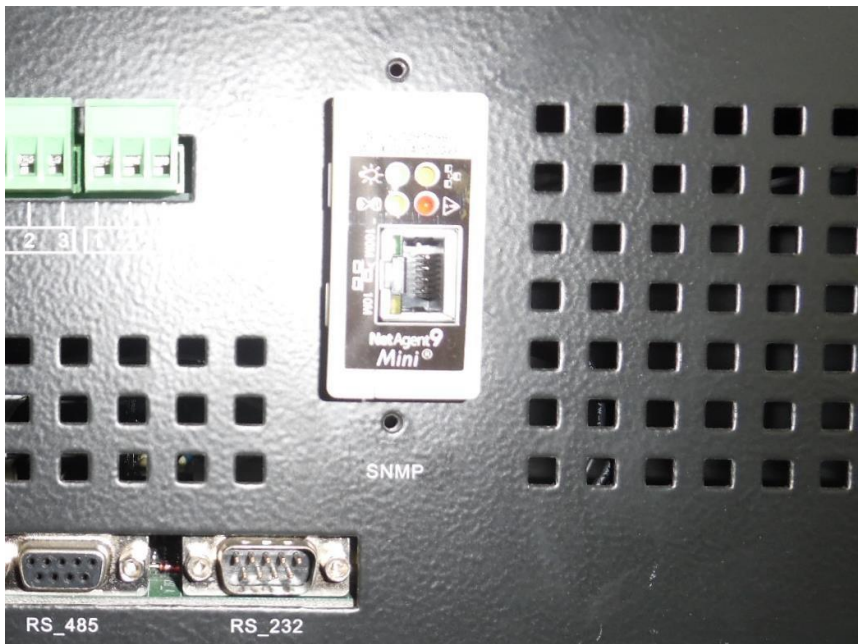
1.1 Remove the cover plate from the Bypass module.



1.2 Connect the terminal present in the rear of the plate directly in the SNMP card



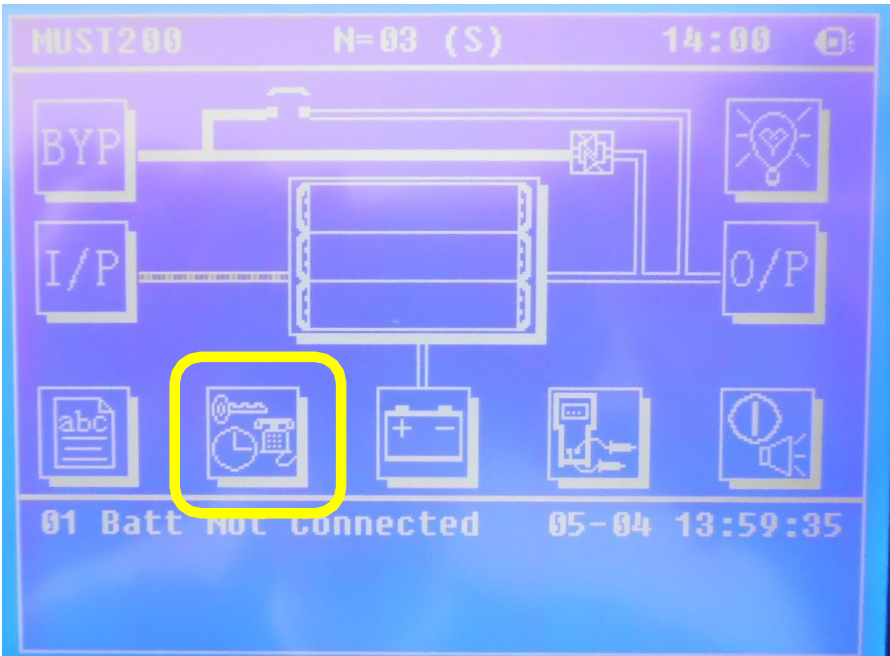
1.3 Insert the SNMP card in the free slot present.



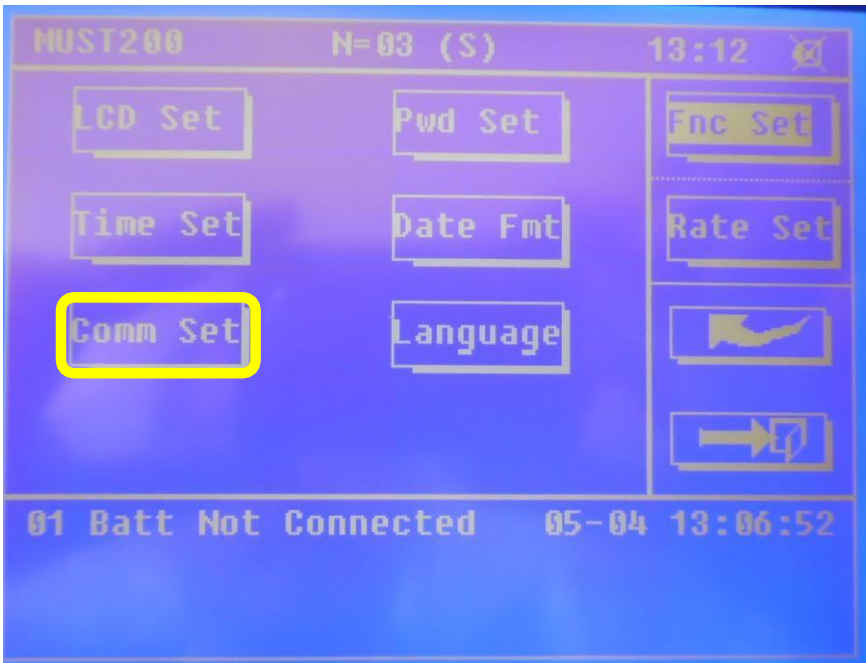
Note: the picture describe 200kVA system. In 120kVA the terminals are smaller.

2. SETTING PROCEDURE

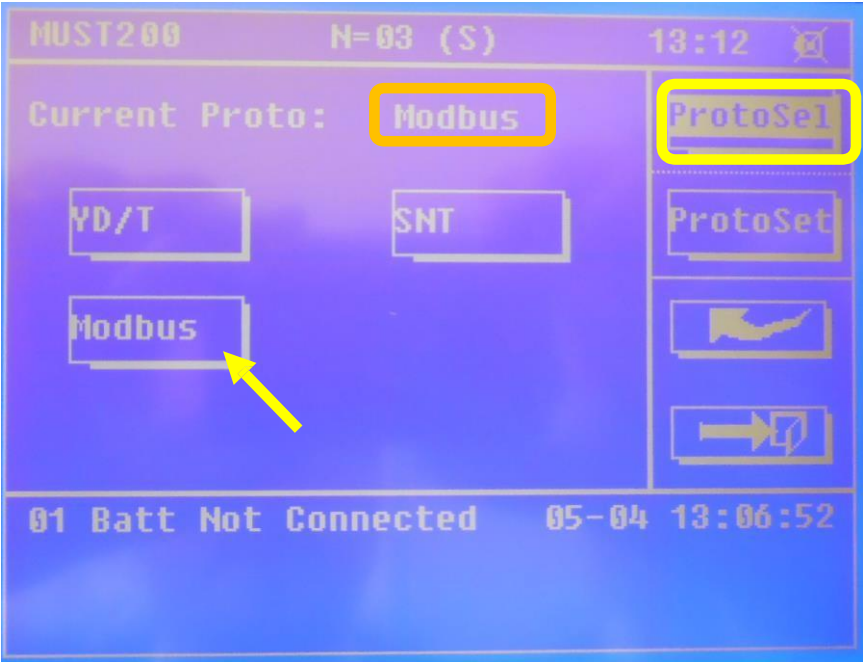
2.1 From home page of LCD screen enter in setting menu.



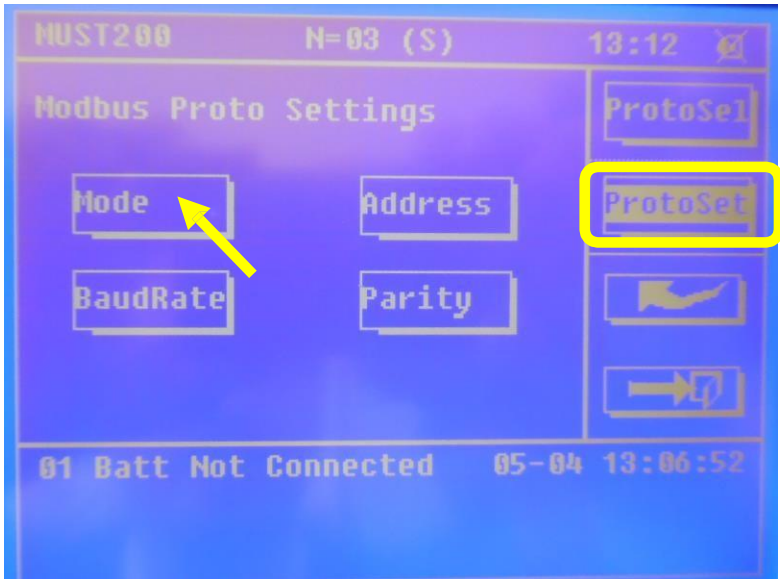
2.2 Set "Comm Set" icon.



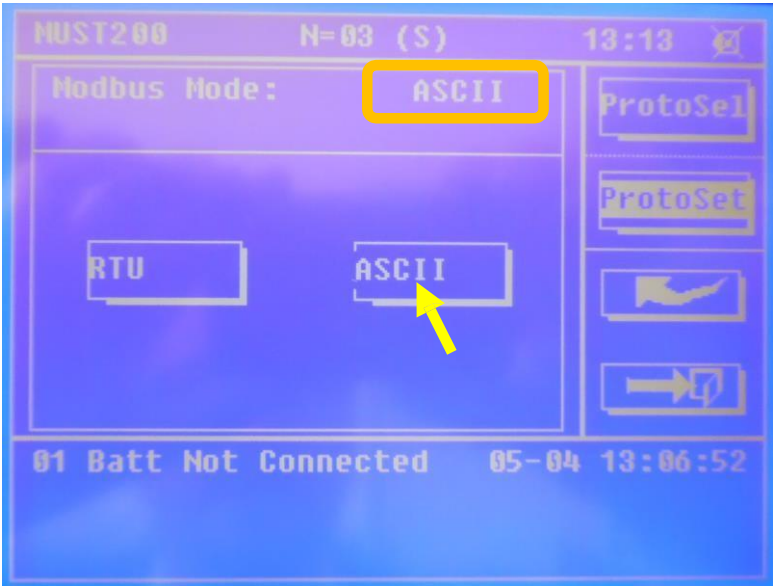
2.3 In “ProtoSel” menu set “Modbus” or verify that is already set Modbus



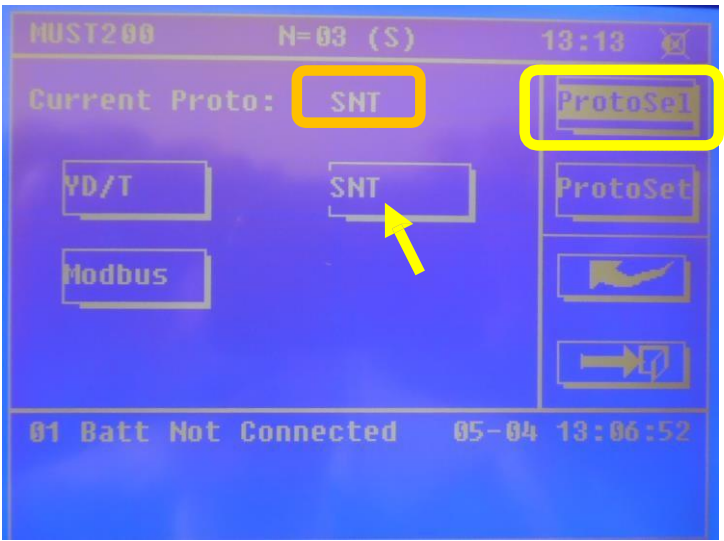
2.4 Enter in the “ProtoSel” menu and set “Mode” icon.



2.5 Set “ASCII” or verify that the it is already set as Modbus mode



2.6 Coming back in “ProtoSel” menu and set “SNT” protocol.



Now the configuration of MUST400 is done. For communication setting please refer to SNMP user manual.